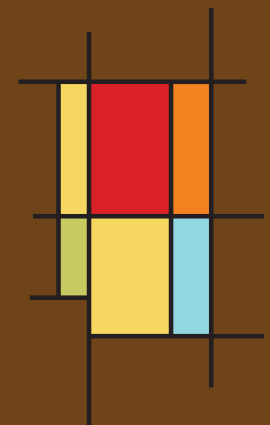


A large, stylized decorative swirl in a light tan color, resembling a vine or a calligraphic flourish, occupies the left side of the image. It features several loops and curves, with some smaller swirls nested within the larger ones. The background is a solid, dark brown color.

Where  home assures
its true meaning...



Close to Electronic City

About us

VMAKS BUILDERS dedicated to develop properties that bring assured appreciating values bringing you **VMAKS CHALET**, a name that's fast rewriting the rules of Bangalore's real estate Scenario. Each of our projects, its Sundance, Blossom, Rosebay, Residency, Roselle, etc stand testimony to our impeccable taste, our commitment to building one-of-a-kind homes and our ability to interpret with quality of dreams of those who dream of the special home.

Your safety is further ensured in the quality of constructions and standard materials that go into the making of the complex.

It shall be an assured appreciation of the Asset in case you plan a prudent investment too and one of the treasured acquisition of your lifetime.



About VMAKS CHALET

VMAKS CHALET a luxury residential apartment BMRDA approved with 112 flats in green city close to Electronic city Ananth nagar – Hosur road Bangalore.

VMAKS CHALET is everything you wanted in a home & more, speciously well designed as a private low-rise apartment surrounded by the beauty of nature to give you a quality of life. With each flat offering functional layout Excellent natural light, ventilation and privacy to the premium, specification, fixtures and finishes.

VMAKS CHALET has everything you need, an exclusive recreations facilities, children's play zone, party hall, peripheral jogging track, swimming pool and common areas makes the project complete in all respects.

Vaastu complaint designed rain water harvesting, security system and standby power ensure complete peace of mind and comfort for the residence.



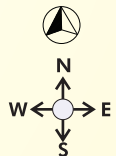
AREA STATEMENT - VMAKS CHALET

Sl.No.	FLAT No.	TYPE	AREA
1	001	3BHK	1450sft
2	005	3BHK	1685sft
3	009	3BHK	1679sft
4	010	3BHK	1755sft
5	014	3BHK	1575sft
6	018	3BHK	1539sft
7	019	3BHK	1616sft
8	023	3BHK	1544sft
9	027	3BHK	1845sft
10	028	3BHK	1787sft

Sl. No	FLAT No.	TYPE	AREA
1	002, 003, 004, 006, 007, 008	2BHK	1176sft
2	011, 012, 020, 021, 022, 025, 026	2BHK	1261sft
3	013, 015	2BHK	1305sft
4	016,017, 024	2BHK	1162sft

BASEMENT+GROUND+3UPPER FLOORS

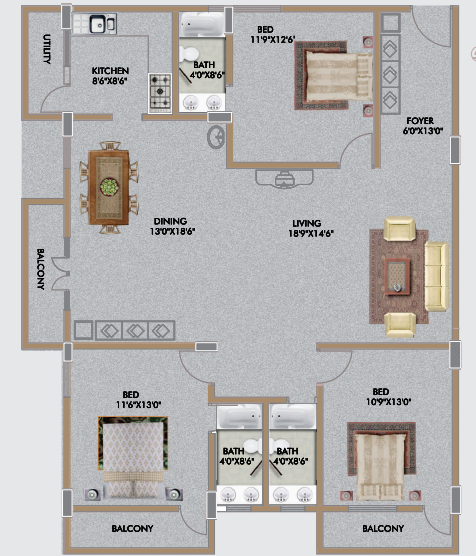
3BHK 10UNITS =40UNITS
2BHK 18UNITS =72UNITS
TOTAL =112UNITS



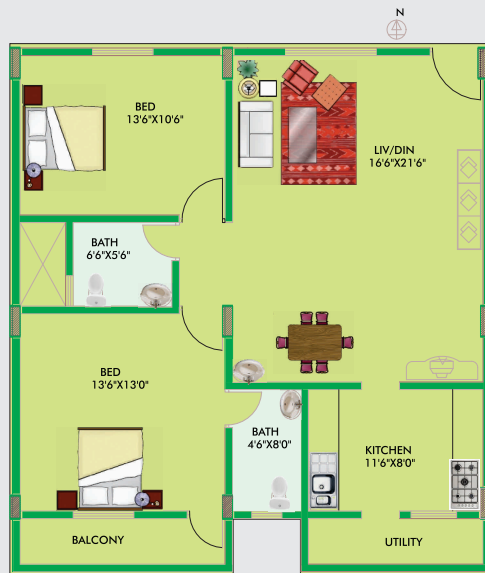
Floor Plan



2BHK - 1162sqft - Flat No. 016



3BHK - 1845sqft - FLAT No. 027



2BHK - 1261sqft - Flat No. 021



3BHK - 1679sqft - Flat No. 009

Specifications :



Structure	: RCC frame work designed as per ISI CODE
Walls	: 6" thick cement solid block for exterior wall and 4" cement solid block for internal walls.
Plastering	: Internal cement mortar with lime rendering, external with sponge finish.
Doors	: Main door teak wood frame with Moulded Shutter, other doors will be Sal wood frame with Moulded Shutter and commercial shutter for balconies.
Windows	: 3 track aluminum window with internal grills.
Flooring	: Regent vitrified tiles for Living, Dining & Bedroom areas, Kota or equivalent flooring for common areas, antiskid ceramic tiles for flooring & 7' height dadoin
Kitchen	: Granite platform with stainless steel sink and 2' height glazed tiles above platform.



Toilets/ Plumbing	: Hind ware/Cerra ware sanitary fittings and quality CP fittings of ESSESS/equivalent will be provided with ISI pipes and fittings.
Painting	: OBD paints for internal walls, Enamel paint for grills and railings and cement paint for external surfaces.
Electrical	: Concealed Modular Switches of Anchor Roma or equivalent with ISI Copper Wires and Cables.
Water Supply	: 24 hours water supply from bore well with overhead tank and pump.
Common Areas	: Vitrified / Ceramic flooring for common areas like Staircase, lobbies etc, with iron railings & Landscaped in other area with water bodies.
Elevation	: Aesthetic elevation with compound wall and gates.
Car Park	: Car parking facility shall be provided in stilt floor.

Amenities :



- Swimming pool
- Play area for children's
- Peripheral Jogging track
- Gym in the basement floor
- Landscape in common areas
- Party hall
- Four lifts of reputed make
- Generator with appropriate capacity to run lifts and lighting common areas and one point in the flat.
- Security room with intercom facility
- Rain water harvesting
- Sewerage treatment plant
- Project is vastu compliant & much more...



Close by :

PROXIMITY:

15min drive from silk board circle-forum mall
3km from Electronic city – Hosur road

Educational Institution:

Ebenezer International School
Sunrise International School
SFC School
Christ Academy
Candor International School

Hotels & Clubs:

Hotel Guest Line
Gold Coin Club
Crown Plaza

Hospitals:

Vimalaya Hospital
Narayana Hrudayalaya
Sparsh Hospital
Agarwal National Hospital
Ramakrishna Health Care

www.vmaksbuilders.com

Ongoing Project

VMAKS VACHAN



At Nagarabhavi, Bangalore

BBMP
Approved

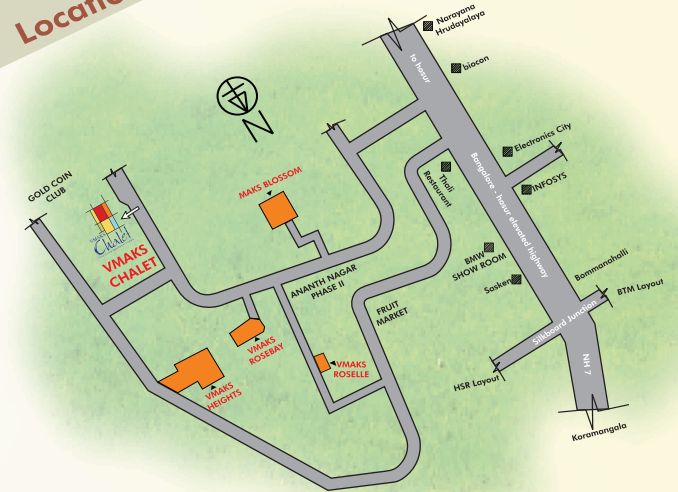
VMAKS RIO



Hosur Main Road, E-City, Bangalore.

BMRDA
Approved

Location :



For More Details :

26650058 / 22440237
9535300005/6



VMAKS BUILDERS PRIVATE LIMITED

131, 6th 'C' Main, Jayanagar 4th Block, Bangalore-560 011

Ph. : 080 - 26650058, 22440237, 9535300005 / 6

e-mail : sales@vmaksbuilders.com

web : www.vmaksbuilders.com

Note : This brochure is only a conceptual presentation of the project and not a legal offering. The promoters reserve the right to make changes in the elevation, plans and specifications as deemed fit.